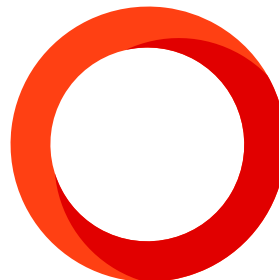
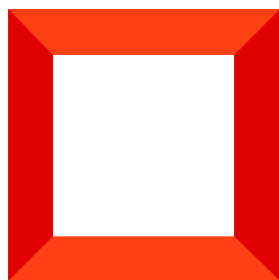
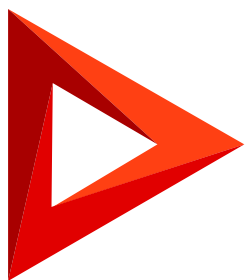


# Check required components

Enable required Windows components

Version 8.0



This documentation is provided under restrictions on use and are protected by intellectual property laws. Except as expressly permitted in your license agreement or allowed by law, you may not use, copy, reproduce, translate, broadcast, modify, license, transmit, distribute, exhibit, perform, publish or display any part, in any form, or by any means. Reverse engineering, disassembly, or decompilation of this documentation, unless required by law for interoperability, is prohibited.

The information contained herein is subject to change without notice and is not warranted to be error-free. If you find any errors, please report them to us in writing.

# Table of Contents

<b>Enable required Windows components</b>	<b>4</b>
Enable required Windows Components on Windows Server 2016	5
Enable required Windows Components on Windows 10	15

# Enable required Windows components

PRODUCTS: **ALL CREATIO PRODUCTS**

Make sure that you install the following components on the web server before you create and set up a website:

- Windows components. Note that the Microsoft Visual C++ 2010 component is required.
- Web Server IIS components.

To ensure correct compilation of the application, download and install .NET 6 SDK and .NET Framework SDK v 4.7.2.

Grant permissions to read, create and delete files and subfolders of the \Terrasoft.WebApp\Terrasoft.Configuration catalog to the user who runs the application pool in IIS.

[Download 64-bit .NET 6 SDK](#)

[Download 64-bit .NET Framework SDK v 4.7.2](#)

**Attention.** Production environment for Creatio .NET Framework application requires a Windows Server OS. You can deploy application server on Windows 10 only for development and pre-production environments.

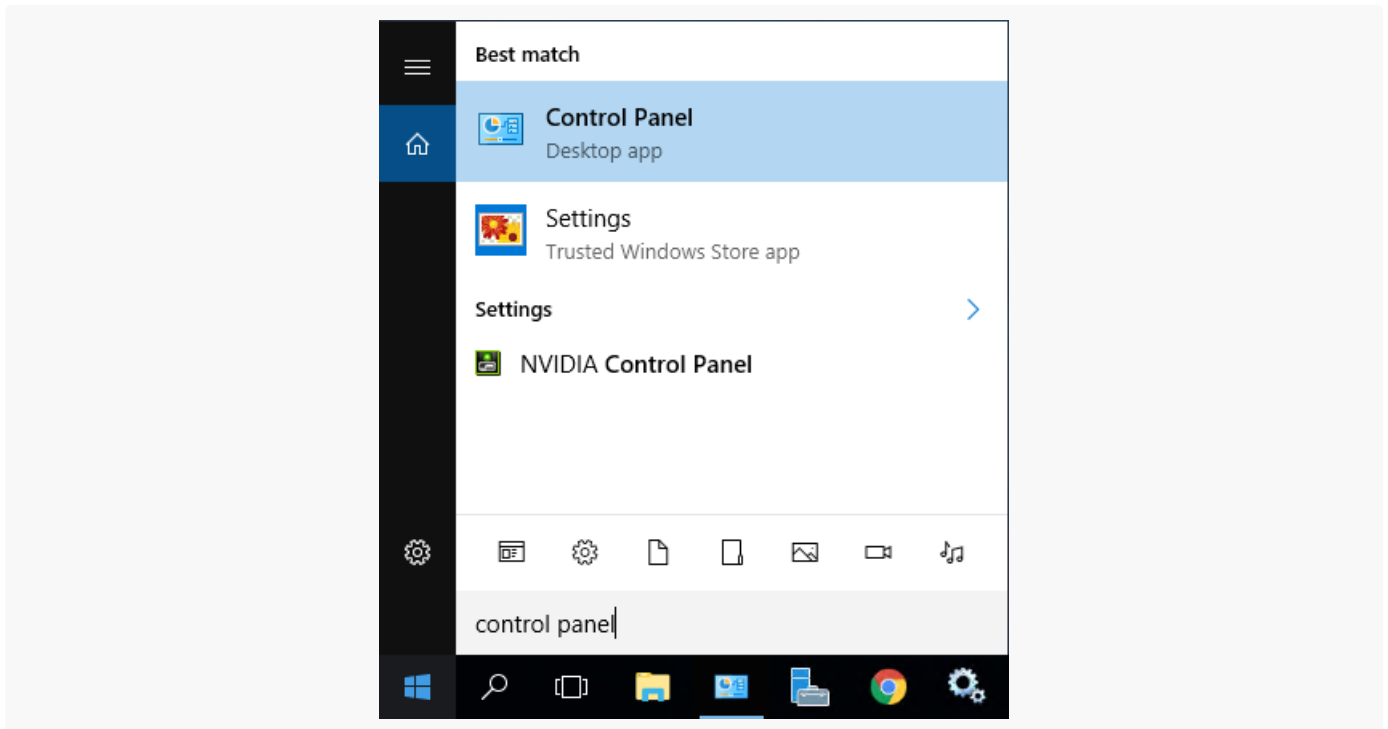
Component	Component items
Common HTTP Features	Static Content Default Document HTTP Errors HTTP Redirection
Application Development	ASP.Net .Net extensibility ISAPI extensions ISAPI Filters WebSocket Protocol
Microsoft .Net framework 3.5.1	Windows Communication Foundation HTTP Activation Windows Communication Foundation Non-HTTP Activation
Microsoft .Net Framework 4.7 Advanced Services and up (Windows 8, Windows 10, Windows Server 2012, Windows Server 2016).	ASP.NET 4.6.2 or 4.7; WCF services HTTP Activation Message Queuing (MSMQ) Activation Named Pipe Activation TCP Activation TCP Port Sharing
Health and Diagnostics:	HTTP Logging Logging Tools Request Monitor Custom Logging
Security	Basic Authentication Request Filtering IP and Domain Restriction

## Enable required Windows Components on Windows Server 2016

To check the availability of the needed components:

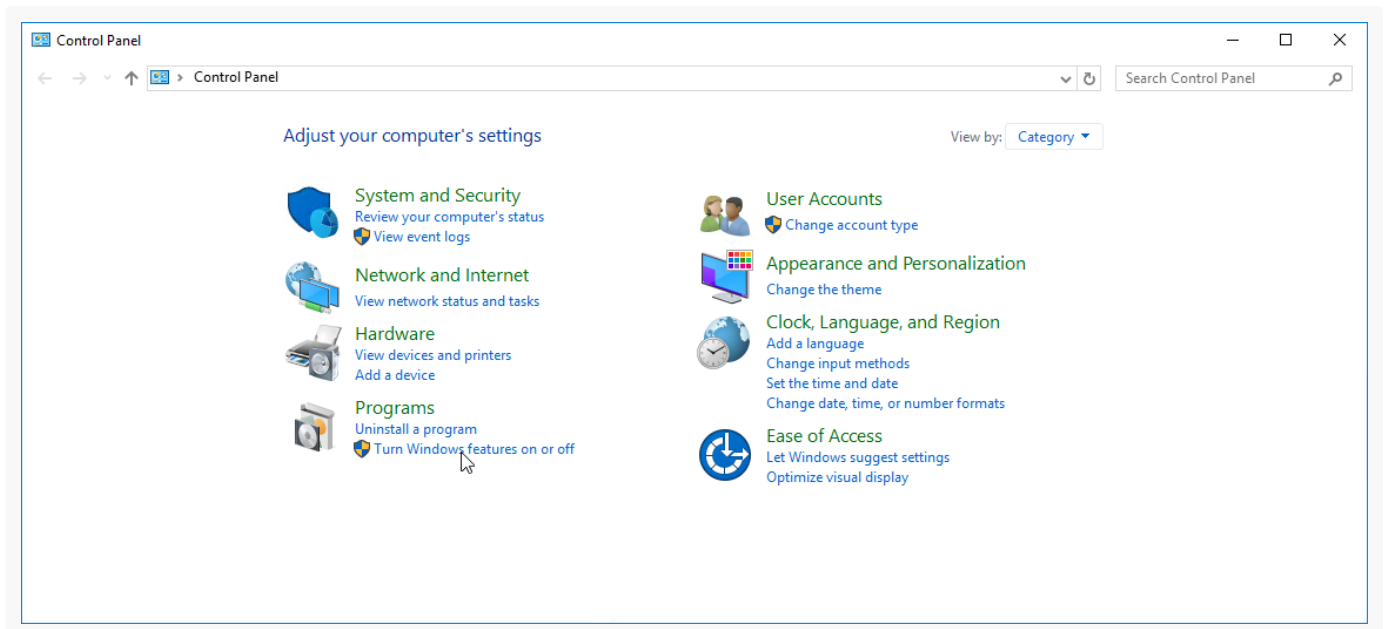
1. Enter the “control panel” in the [ Start ] menu and select the [ Control Panel ] (Fig. 1).

Fig. 1 The [ Control Panel ] section in the [ Start ] menu



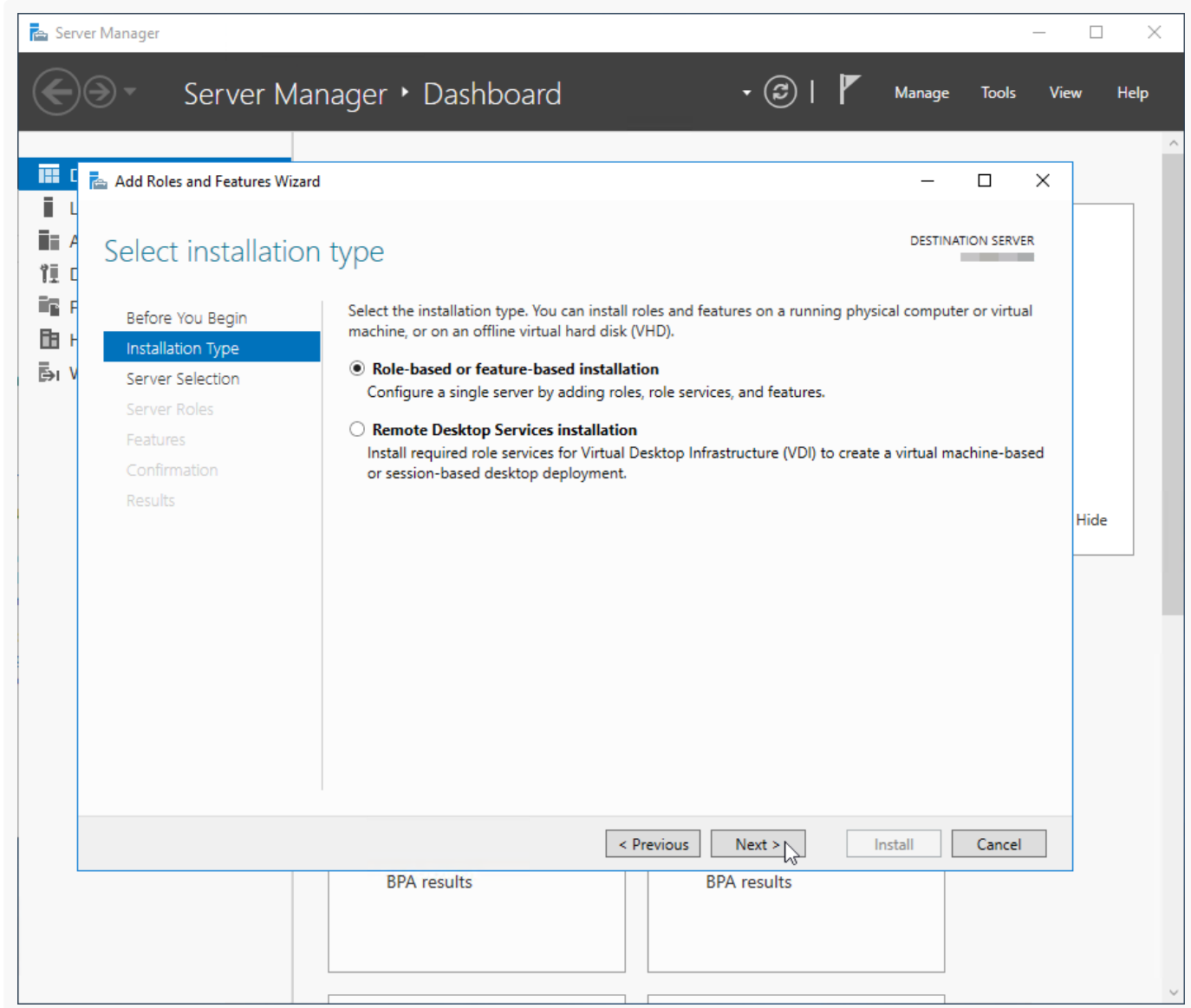
2. From the [ Control Panel ], select the [ Turn Windows features on or off ] option (Fig. 2).

Fig. 2 Selecting the [ Turn Windows features on or off ] option



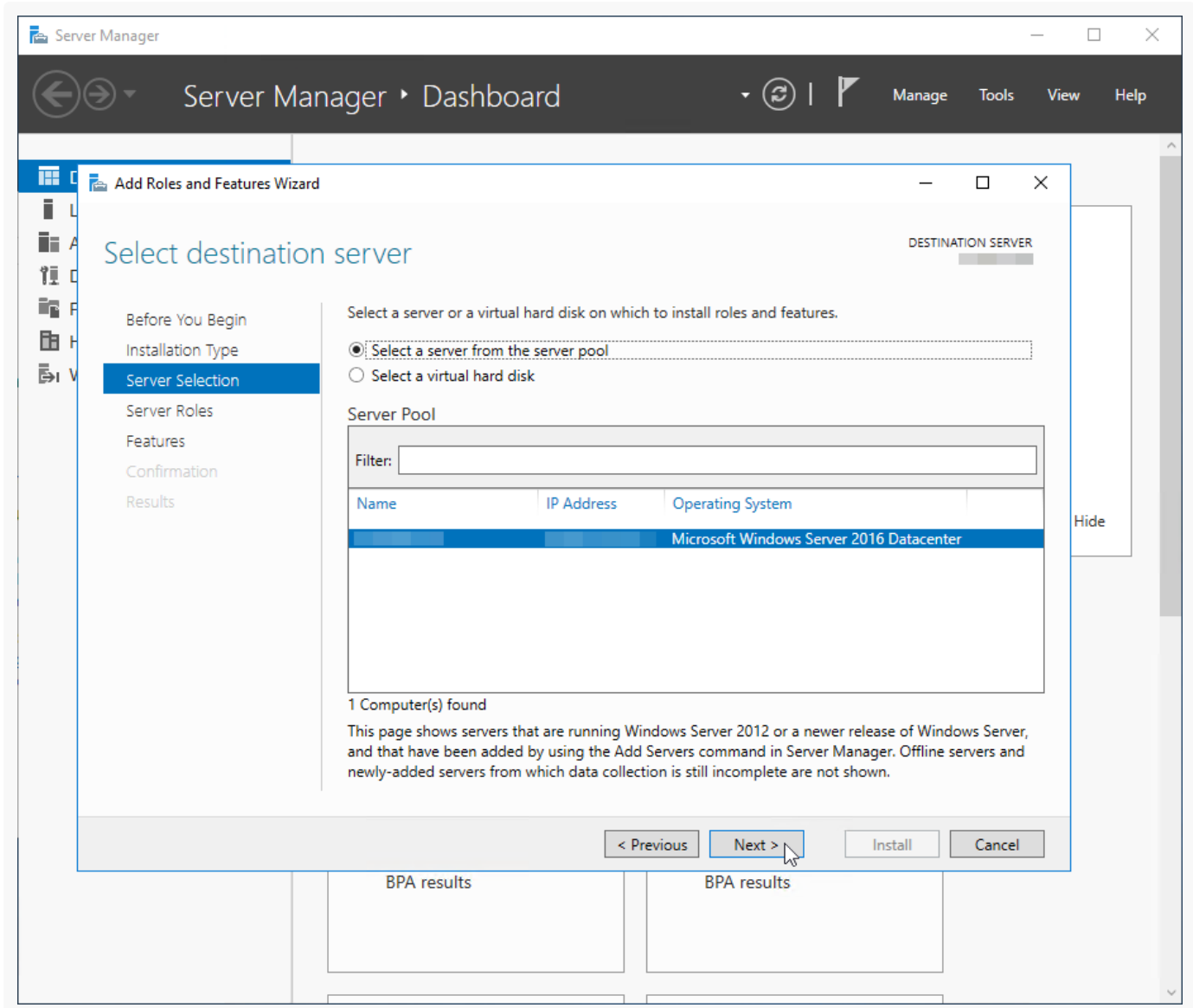
3. In the [ Add Roles and Features Wizard ], select [ Role-based or feature-based installation ] → [ Next ] (Fig. 3).

Fig. 3 Selecting the role-based installation



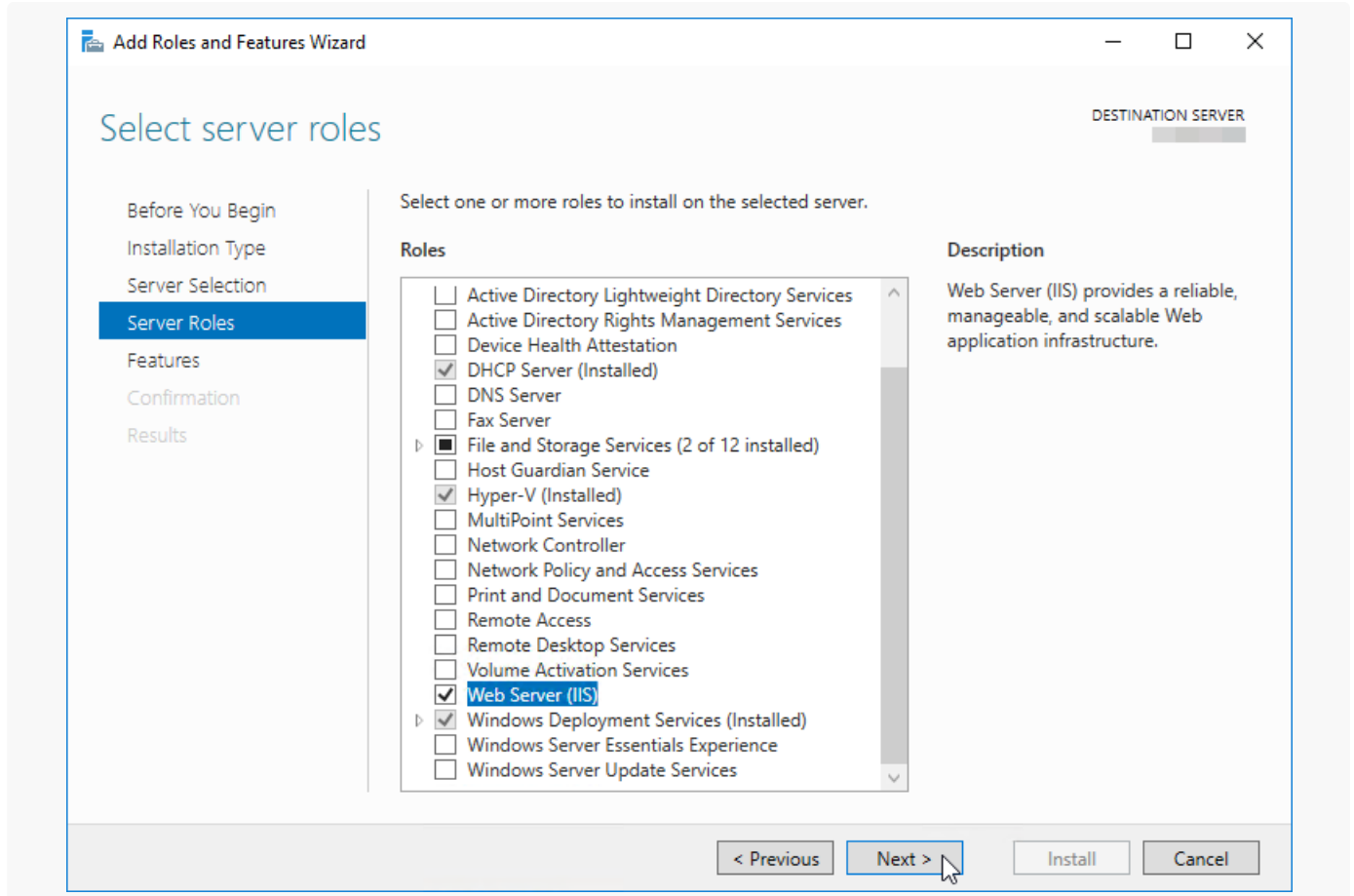
4. Select the destination server from the available server pool and click [ Next ] ([Fig. 4](#)).

Fig. 4 Selecting the destination server



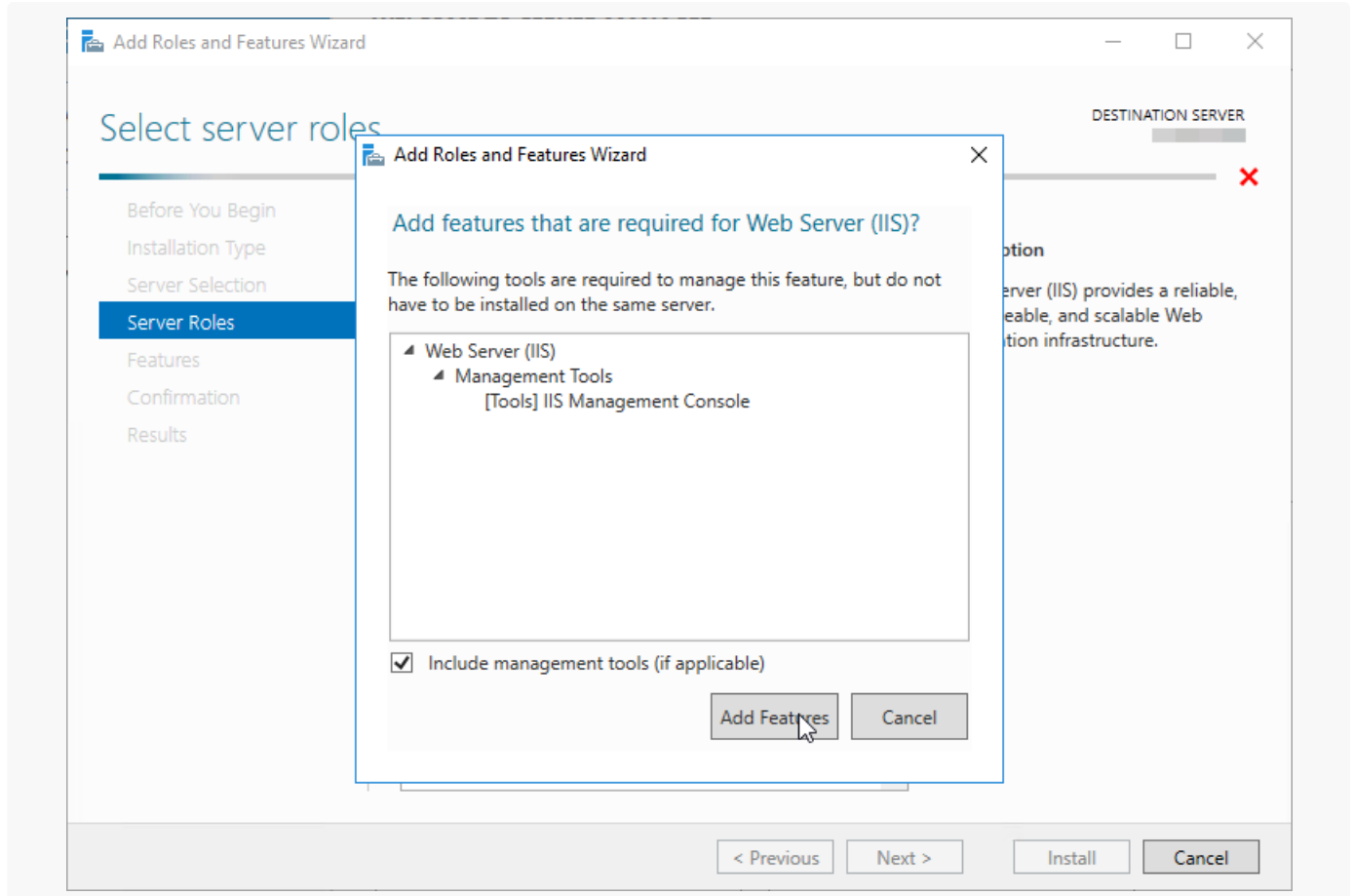
5. Select the Web Server (IIS) role to apply to the selected server. Click [ Next ] ([Fig. 5](#)).

Fig. 5 Selecting the Web Server (IIS) role



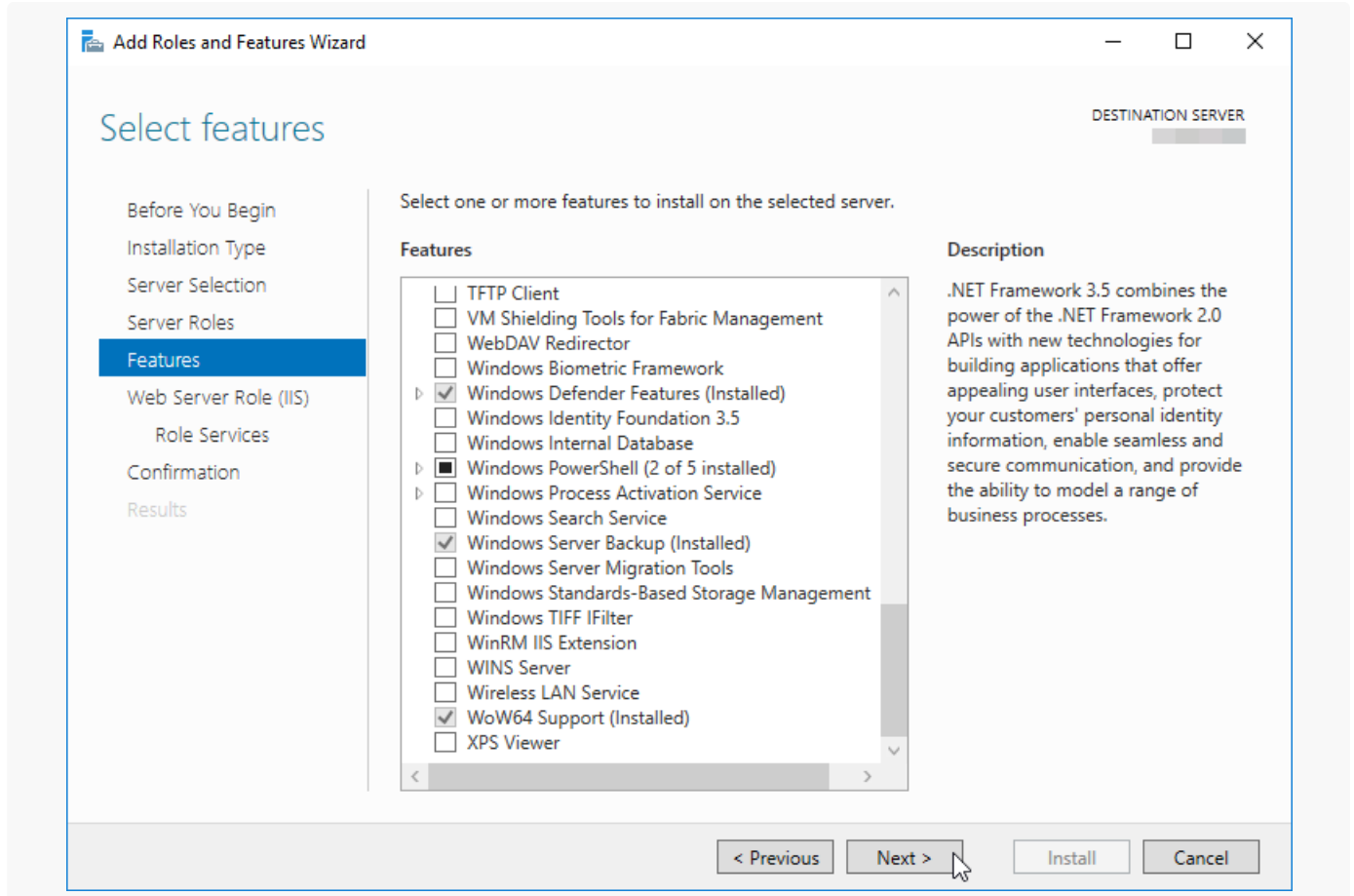
6. Click [ Add features ] ([Fig. 6](#)).

Fig. 6 Confirming selected features



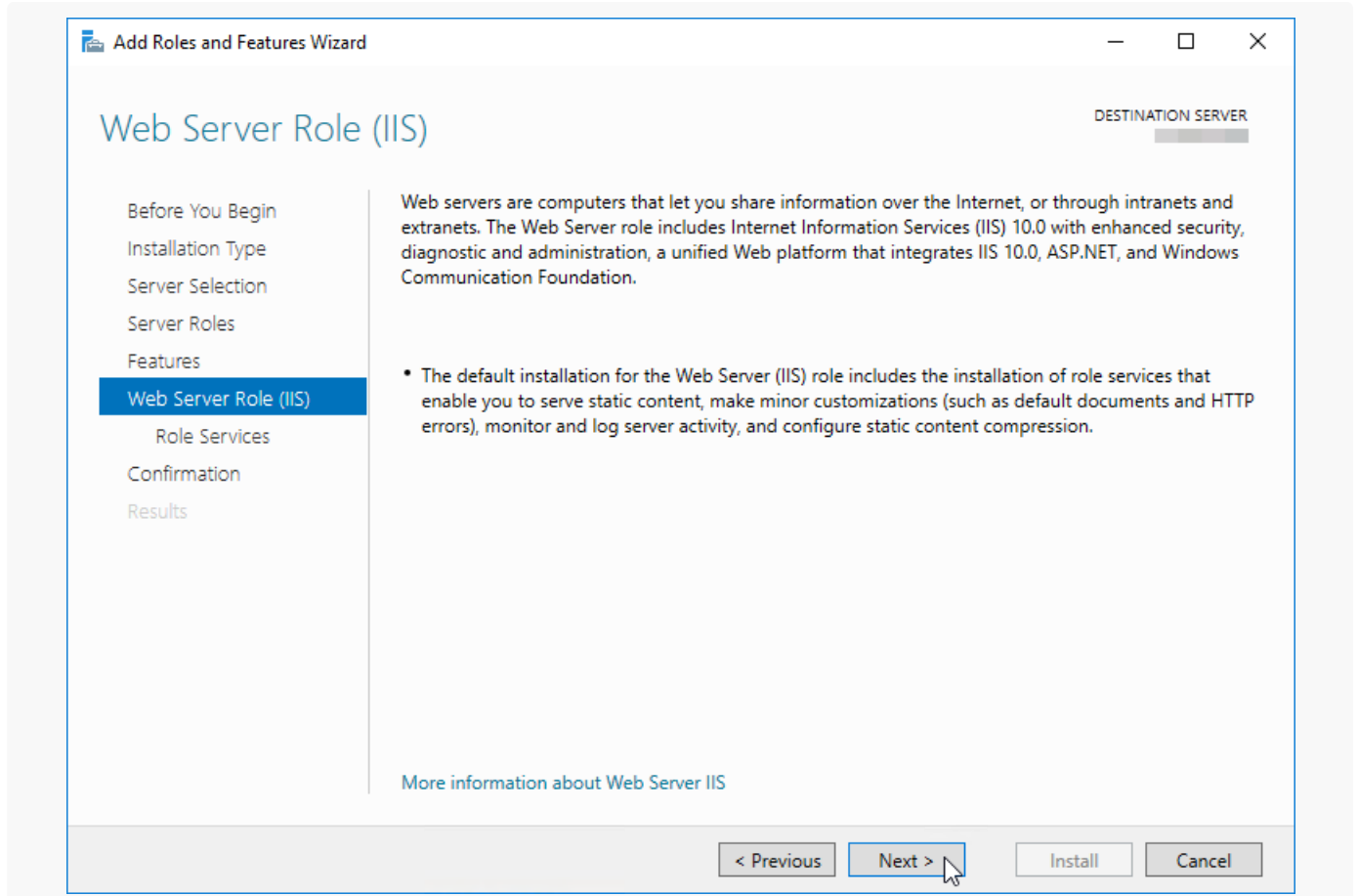
7. Select features and click [ Next ] ([Fig. 7](#)).

Fig. 7 Selecting features



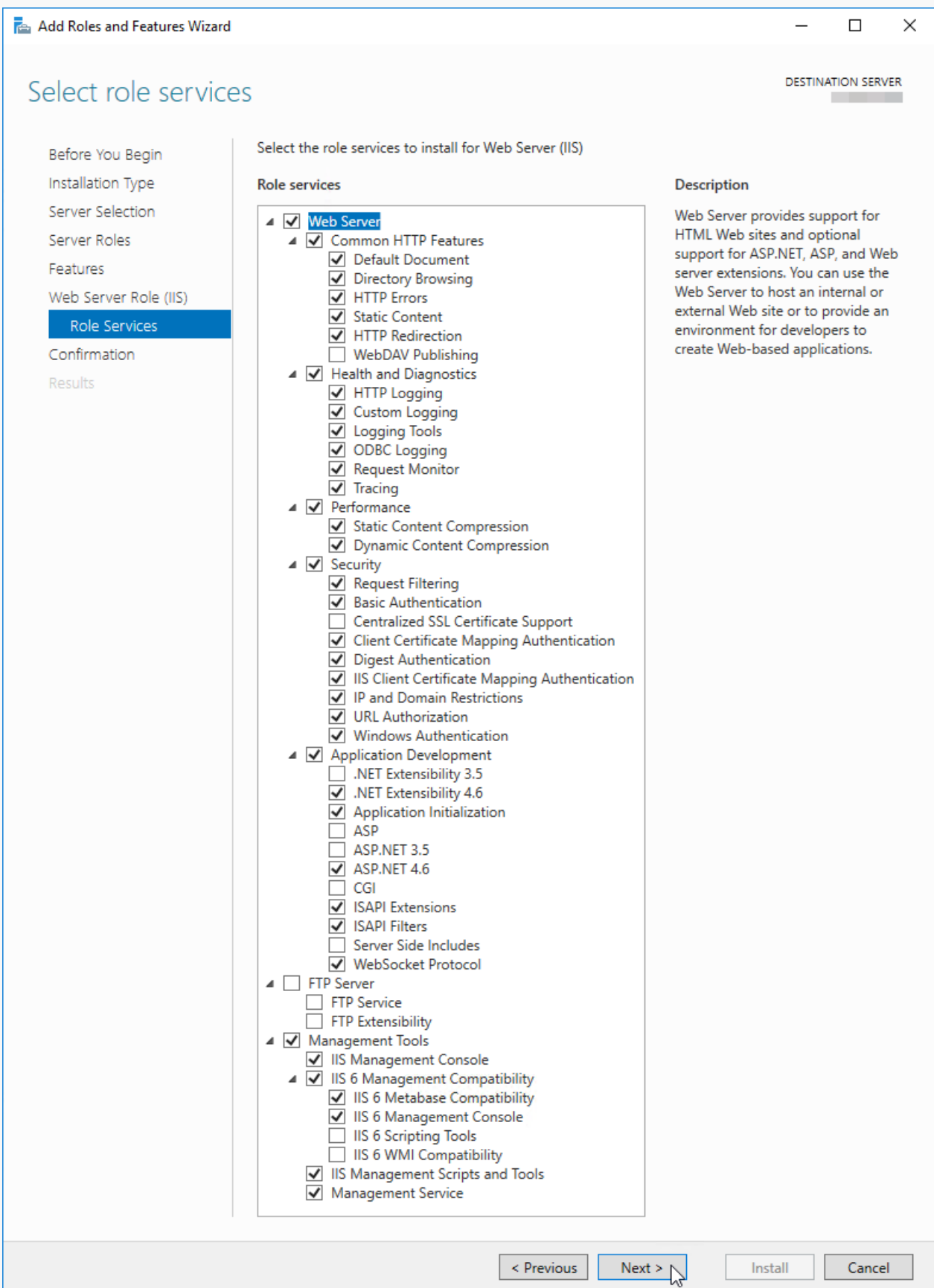
8. Click [ Next ] to finish proceed to the next step ( ).

Fig. 8 Confirm the web server role



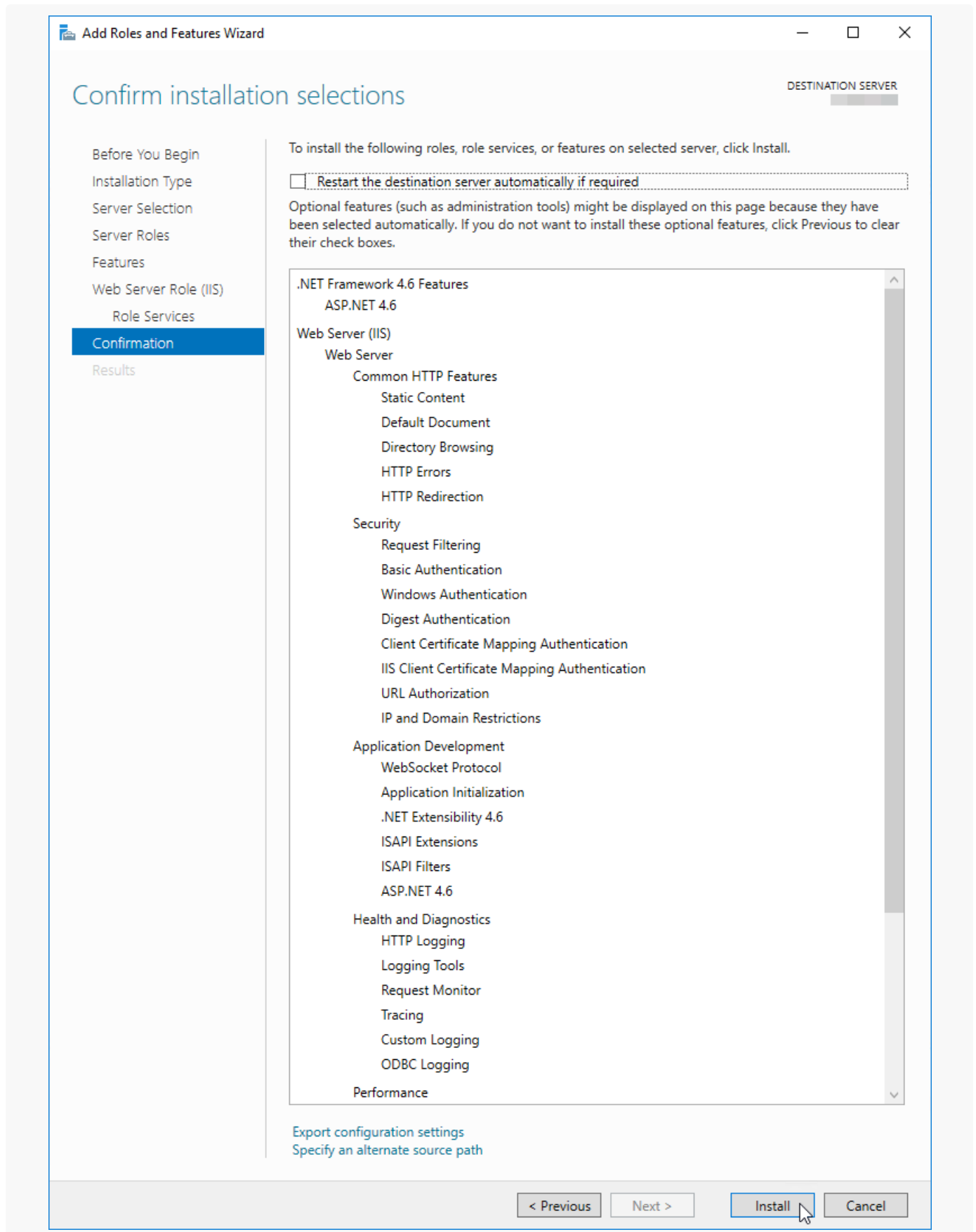
9. Make sure that the you have the same components selected as on the picture (Fig. 9).

Fig. 9 Required components



10. Click [ *Install* ] (Fig. 10).

Fig. 10 Confirm installation



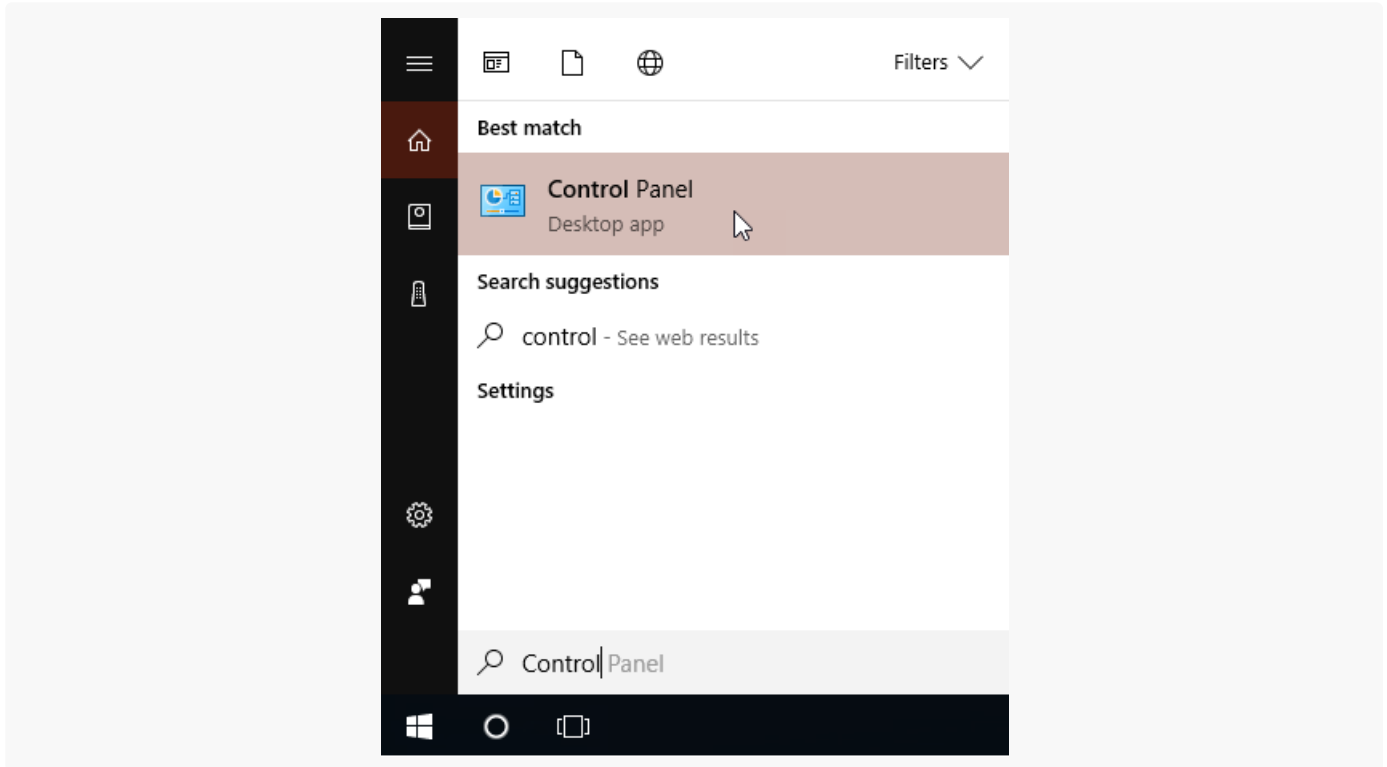
11.Reboot the server.

# Enable required Windows Components on Windows 10

To check the availability of the needed components:

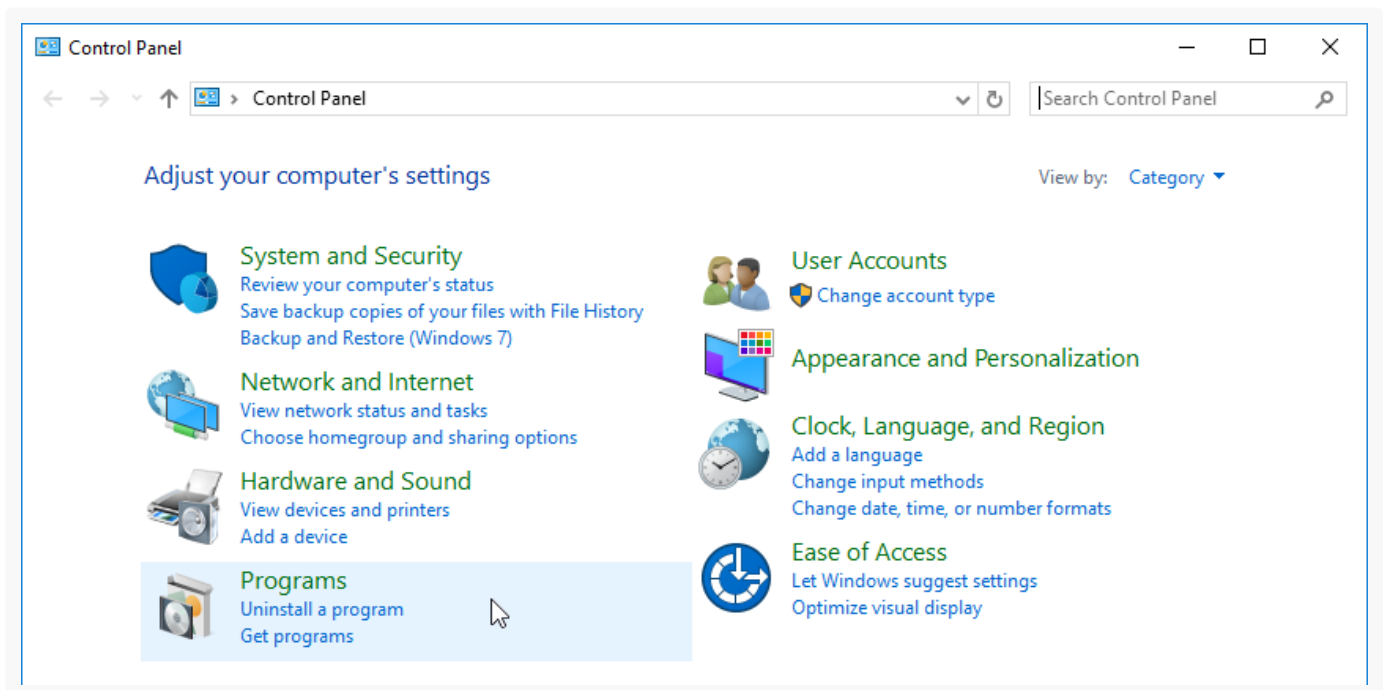
1. Enter the “control panel” in the [ *Start* ] menu and select the [ *Control Panel* ] ([Fig. 1](#)).

Fig. 1 The [ *Control Panel* ] section in the [ *Start* ] menu



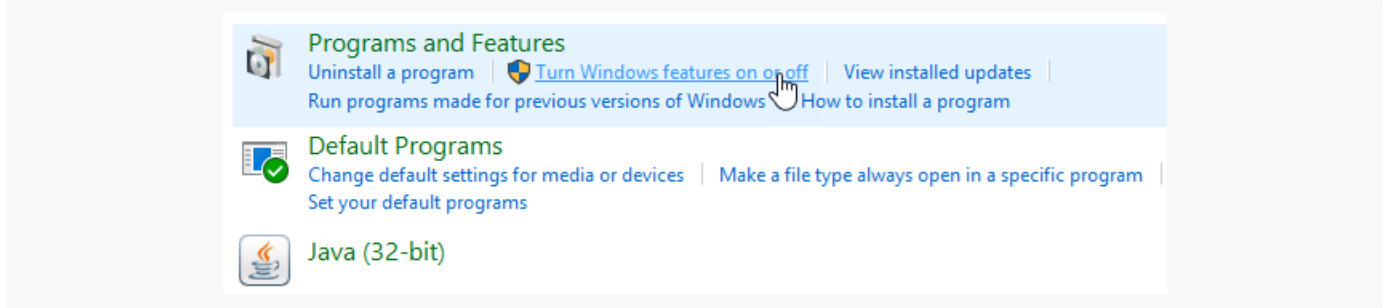
2. Select the [ *Programs* ] option in the opened window ([Fig. 2](#)).

Fig. 2 The [ *Programs* ] menu



- From the [ *Programs and Features* ] menu, select the [ *Turn Windows features on or off* ] option (Fig. 2).

Fig. 3 Selecting the [ *Turn Windows features on or off* ] option



- Select all required components in the [ *Windows Features* ] window (Fig. 4).

Fig. 4 Selecting Web Server IIS and Windows components

